

RECEIVING/ TRANSFER APPLICATION

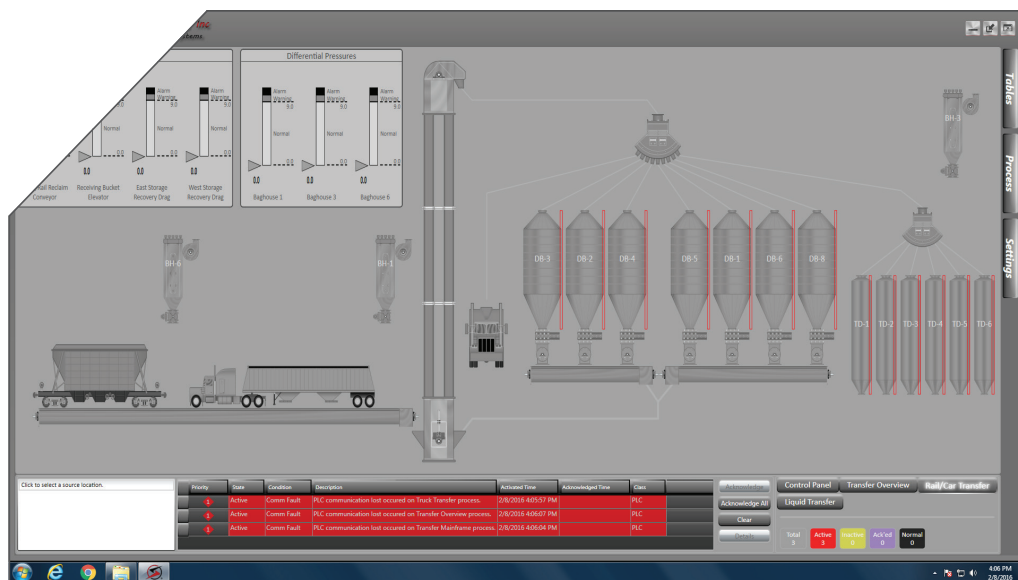
Benefits:

- Faster off-loading of grain and commodities
- Meet traceability and validation requirements with material tracking
- Better reports for management; by vendor, farmer, truck/rail company
- More efficient, greater productivity due to easy operation and better knowledge of what you have and where it is

Typical Features:

- Receive materials by truck or rail
- Automated routing – interlocks or manual operation
- Include shipping and transfer functions
- Simple data entry
- Modern graphic displays
- “Point & Click” movement of material from point A to B
- Integrate with ERP system or other third party software
- Grinding and Use bins auto refill with level indication

RECEIVING / TRANSFER FEEDMILL AUTOMATION



Feedmill automation can simplify operation and improve efficiency of cost and throughput. Sterling Systems & Controls, Inc. custom designs and manufactures the highest quality automation control systems for virtually any Feedmill process or a complete facility.

Sterling Systems & Controls designs and provides equipment and software for custom systems using Allen-Bradley PLC's and desktop PC's running Sterling Systems' customized Windows-based Automation Software.

Sterling's forty-five plus (45+) years of Feedmill process and Feedmill automation experience ensures quality and efficiency in both hardware and software.

RECEIVING / TRANSFER

The Receiving/Transfer application is custom designed to suit your exact needs. This includes allowing for only manual control or including the ability to allow for automatic receiving and transfer steps.

A fully automatic Receiving & Transfer application accurately tracks and transfers incoming grain and commodity materials to the correct location within your facility each and every time.

Truck or Railcar transport of incoming materials can be accommodated. Feed rates are controlled to maximize efficiency and material safety. After the material has been moved into the containment location (bin etc.) the system logs and weighs empty trucks before they leave the facility. Weight measurements are logged into the material tracking function, maintaining accuracy and traceability.

The Transfer function connects your Feedmill together. It guides the movement of your grains, other commodities, and finished product from one process point to the next. The Transfer function allows you to control material movement between receiving and loadout. This ensures the safety of your produced Feed, and the accuracy, speed and efficiency of the production process.

The Receiving & Transfer application performs a vital role protecting against material contamination, managing shared equipment, distributor head functions, container filling/discharge, and material transfers within containers, thereby providing safe and fast transfers.

KEY BENEFITS

FAST OFF-LOADING OF ALL MATERIALS:

More efficient receiving and transfer of your incoming materials means higher throughput, more production, and lower labor costs.

SUPERIOR REPORTS:

Records and information is stored in a database by farmer, vendor, truck/rail company, etc. allowing you to provide custom reports.

KNOWING WHAT YOU HAVE & WHERE IT IS:

Traceability, lot tracking and batch validation is enhanced. Less errors and increased efficiency means greater profitability.

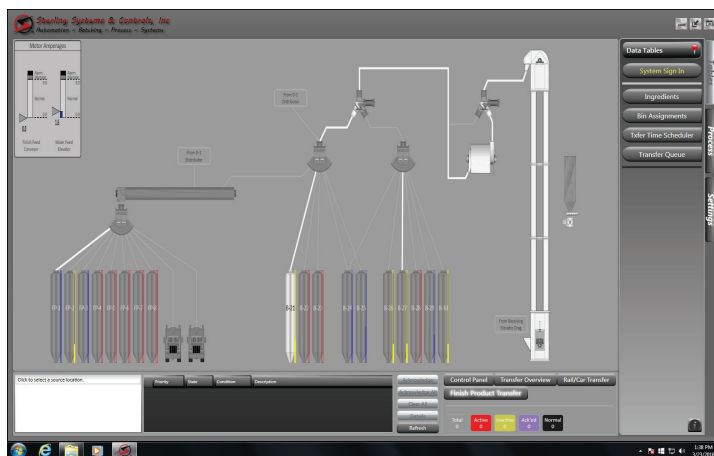


Figure 1: Automatic or manual transfer from receiving to storage

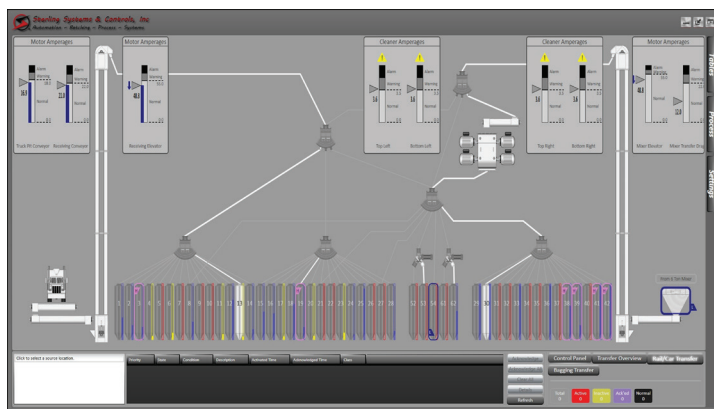


Figure 2: Managing distribution heads, know what is where

ABC Feed 1234 Anywhere Street Best Feedmill, IL USA 00000		Ticket # 7029																																				
Commodity: 0118 Wheat Test Weight: 57.5 + 0.00 Moisture: 12.9 Doc. 0.00 Damage: 0.50 Doc. 0.00 FM: 0.00 Doc. 0.00 Check Off: 0.00500		Received By: Jim 7/2/2018 11:32 AM In Weight: 56,060Lbs 7/2/2018 10:47 AM Out Weight: 20,000Lbs Net Weight: 36,060Lbs Bushels: 601.00 Net Amount: \$3002.00																																				
Delivery: 7/2/2018 10:47 AM Hauler: John GrainGuy Driver On: Yes		Comments: <div style="border: 1px solid black; height: 40px;"></div>																																				
<table border="1"> <thead> <tr> <th>Code</th> <th>Seller Name</th> <th>Share</th> <th>Sell</th> <th>Pick Up</th> <th>Mail</th> <th>DP</th> <th>Jan Pay</th> <th>\$/Bu</th> <th>Net/Bu</th> <th>Contract</th> <th>Bushels</th> </tr> </thead> <tbody> <tr> <td>0000</td> <td>John GrainGuy</td> <td>100.00%</td> <td>No</td> <td>No</td> <td>No</td> <td>No</td> <td>No</td> <td>\$5.00</td> <td>5.00</td> <td>22202</td> <td>601.00</td> </tr> <tr> <td colspan="2">Total Share:</td> <td>100%</td> <td colspan="9"></td> </tr> </tbody> </table>			Code	Seller Name	Share	Sell	Pick Up	Mail	DP	Jan Pay	\$/Bu	Net/Bu	Contract	Bushels	0000	John GrainGuy	100.00%	No	No	No	No	No	\$5.00	5.00	22202	601.00	Total Share:		100%									
Code	Seller Name	Share	Sell	Pick Up	Mail	DP	Jan Pay	\$/Bu	Net/Bu	Contract	Bushels																											
0000	John GrainGuy	100.00%	No	No	No	No	No	\$5.00	5.00	22202	601.00																											
Total Share:		100%																																				
X <i>John GrainGuy</i>		Date: 7/2/2018																																				

Figure 3: Truck scale ticket for Grain Receiving



STERLING
 SYSTEMS & CONTROLS, INC.
 Automation ~ Batching ~ Process ~ Systems

1-815-625-0852
 sci@sterlingcontrols.com

Serving your processing needs for over 45 years.