



KROHNE

▶ measure the facts

Process Measurement Solutions for the
Food and Beverage Industry



Innovative Technology
Since 1921

▶ measure the facts

▶ VOLUMETRIC FLOW

Electromagnetic Flow Meters

- PMO meter approved for use in pasteurization loops per FDA requirements.
- Available in sizes from 1/2" to 6" - All stainless steel with tri-clover fittings
- Guaranteed hygienic seal - Vacuum-proof liner
- Lock out feature stops tampering, external locking device prevents opening
- Sanitary process connectors available
- Exceeds CIP, AMDERC, FDA and 3-A requirements
- Largest magmeter size selection in the industry, 1/10" to 120"
- Widest selection of liners and electrode materials available
- World's largest producer of magmeters



OPTIFLUX 6300
PMO Meter



IFC 100



▶ BATCH FILLING

Electromagnetic & Coriolis Flow Meters



BATCHFLUX 5500 C
Magnetometer

- Volumetric filling and batching
- High stability ceramics measuring tube, extremely stable, long-term
- Excellent reliability and accuracy
- Optimum sanitary design
- Only 2" overall width
- Variety of diagnosis functions



OPTIBATCH 4011 C
Coriolis Meter

- Compact design with hygienic design of process connections for food, beverage and pharmaceutical applications with welded outer casing
- Stainless Steel 316L construction
- CIP / SIP to maximum 120°C / 248°F
- Mass filling and batching
- Integrated electronics



▶ VA Meters

Variable Area Flow Meters

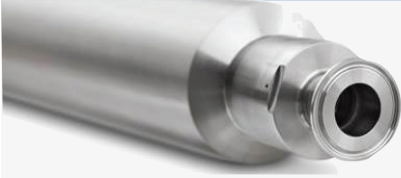


H250 F M40

- All metal instrument specially designed for use in the food and pharmaceutical industries
- Accurate measurement of liquids, gases and saturated steam
- Available options include HART, Fieldbus, LCD digital display of rate and totalizer, analog, pulse and alarm outputs, switches
- CIP and SIP compatible, FDA compliant, Tri-clamp connections, flanges, etc.
- Indicator in modular design, optional heating jacket, optional stainless steel housing

MASS FLOW

Coriolis Meters



Highly precise mass and density measurement - accuracy 0.1%
Multifunctional sensor for direct measurement of density, mass, volume and media temperature

Single, straight measuring pipe, no flow divider - or two parallel tubes, optimised flow divider
Entrained Gas/Air Management immune to gas entrainments/ two-phase flows



OPTIMASS 6400

Entrained gas/air management
0 - 100%



OPTIMASS 7400

Easily drained and easy to clean

Low flow velocity, therefore low pressure loss

FDA compliant, 3-A, ASME Bioprocessing certified

Optional heating jacket



OPTIMASS 1400

LEVEL

Level Meters & Switches



OPTIWAVE 3500

Loop powered FMCW radar, up to 80GHz, TDR technology for contact and non-contact continuous level measurement

Independent of pressure, temperature and density

Unaffected by dust, vapor, foam

CIP / SIP up to 150°C or 300°F
Suitable to various tank shapes and sizes

Advanced diagnostics, configuration, visualization and trending software

Liquids interface TDR, level switches available for liquids and solids

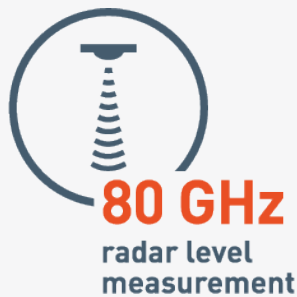
Wide choice of process connections



LS 6600



OPTIWAVE 6500



OPTIFLEX 3200



LS 6500



LIQUID ANALYSIS

pH, ORP, Conductivity, Chlorine, Turbidity Solutions

Conductivity or concentration measurement in CIP circuits

Multi-path total solids sensor for milk fat measurements, filtration/separator control and solid concentration monitoring

Waste water version of total solids sensor for early detection of product loss



OPTISYS IND 8100



OPTISYS TSS 1050-3050

Compact turbidity sensor for TS measurement in CIP circuits

Digital pH/ORP sensors with built-in transmitter technology for off-line calibration and reduced operating costs

Chlorine sensors insensitive to bio fouling and de-polarization



OPTISENS TSS 7000



SMARTPAT 8570

TEMPERATURE

Sensors
Transmitters

PRESSURE



Sanitary
Sensor
Assemblies

OPTITEMP TT51



OPTITEMP
Compact
Sensors



RTDs and thermocouple sensor assemblies

Robust design with sensor backup function reduces the influence of external disturbances

Transmitters featuring easy configuration, installation and maintenance with ConSoft, HART®

One-of-a-kind Smart Sense resistance monitoring detects moisture in the thermowell

Connection heads for a wide variety of requirements, extensive accessories

Hygienic process connections, 3-A approved

Fully welded metallic and ceramic process diaphragms

Superior temperature stability, quick response time

Two-wire 4...20mA

Flush process connections allow for gap-free installation

Universal adaptors for hydrostatic pressure

Extensive diagnostic and parameterization functions on the display and adjustment module or the user-friendly and free DTM



OPTIBAR 2010



OPTIBAR 5060

VORTEX

Energy Management



OPTISWIRL 4200 flange

For steam or gas / compressed air

High measuring accuracy - 1% of measurement value

2-wire device with integrated temperature and/or pressure measurement for true compensated flow

Gross and net heat measurement

Ready to use - plug & play

Maintenance-free sensor design

Fieldbus communication

Pressure and temperature can be called up via HART

Unique valve option for pressure sensor isolation



OPTISWIRL 4200 sandwich



Contact:

KROHNE, Inc.
55 Cherry Hill Drive
Beverly, MA 01960
1-800-356-9464

info@krohne.com
us.krohne.com

KROHNE, Inc.
4100 N. Sam Houston Pkwy W.
Houston, TX 77086
1-281-866-7722

KROHNE, Inc.
300-1100 Burloak Drive
Burlington, Ontario L7L 6B2
1-800-356-9464



<https://us.krohne.com>



info@krohne.com