

# MMC

---

MIDWEST METALCRAFT

200 Industrial Drive  
Windsor, MO 65360  
Office: (660) 647-3167  
Fax: (660) 647-5580  
[www.4mmc.com](http://www.4mmc.com)

**Midwest Metalcraft  
Bringing Midwest Value  
Through Partnering**

# Partnerships

Midwest Metalcraft is committed to:

- Partnering with key customers

- Identifying customers that fit into MMC's capabilities.

- Identifying customers that will commit to outstanding communication.

Helping its partners:

- Increase profitability

- Meet delivery timelines

- Exceed quality standards

- Be innovative through new design potential

# WE SERVICE WHAT WE SELL

## Engineering Experience

Complete Design Capabilities

Working with customers to redesign or develop new product

## Manufacturing Technology

Cutting, punching, forming, welding, finishing, assembly

Supervisors and Lead-men with an average of 20+ years experience

From prototype to production

## Custom Fabrication

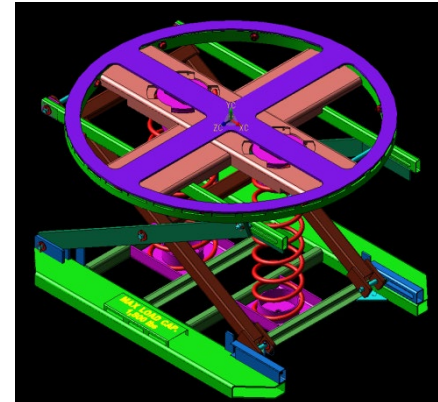
Parts custom fabricated to customer specifications

One-of-a-kind or high volume production, intricate or simple

Prototypes of new product designs

## Total Finishing & Assembly

To meet customer requirements



# BENEFITS

## Quality

**ISO 9001** Certified

Designing & producing the highest quality products

## Technology

Utilizing the latest technology

From complete design to finished product

## Capacity

Room for expansion to meet customer requirements

## Service

Committed to our customers

Our skilled representatives are always available

## Value

Exceptional Value for pricing and lead-times

# Equipment List with Specs

## Brakes

Amada - 220 Metric Ton /14 ft.

Amada - 88 ton /8 ft.

Trumph - 36 Metric Ton / 40 in.

Trumph - 132 Metric Ton / 10 ft.

Trumph - 85 Metric Ton / 8 ft.

## Lasers

### **4,000 Watt Fiber Laser**

84" x 164' production laser system

.375" cap. Steel

.250" cap. Stainless Steel

.190" cap. Aluminum

### **6,000 Watts CO2 Laser**

5' x 10' maximum sheet size capacity

1" thick Stainless Steel

1" thick Carbon Steel

5/8" Aluminum

## Punch

Amada EMK 3610 NT

58 Tool Stations, 33 Ton,

60" Throat-Max Sheet Width

Max Sheet:

.250" Alum, 10ga SS,

10ga Carbon Steel

## Horizontal Band Saw

Band Saw 10" round cap

## Machine Tooling

Hitachi Seiki HT20 turning center

Hitachi Seiki VK45 turning

Acra vertical milling

Jet 1440 3PGH geared head engine

## Ironworker

40 ton with tooling

## Spot Welders

200 KVA capacity

## PemSerter

50 + anvils

## Metal Finishing

Complete metal finishing

## Glass Bead Finishes

Specialized in stainless steel

## Roller

DAVI 6' 4 head roll .375"

# New MMC Fabrication Equipment



Modern  
Trumpf  
Fabrication  
Equipment



Maximum Laser  
Sheet size:  
60"x198"  
Maximum Laser  
Thickness:  
Stainless Steel: 1"  
Carbon Steel: 1"  
Aluminum: .190"





# Equipment List



58 Tool Station  
33ton  
60" width Sheet  
Alum: .250"  
S/S: 10GA  
Carbon: 10GA



80 Metric Ton  
Brake Capacity



220 Metric Ton  
Brake Capacity



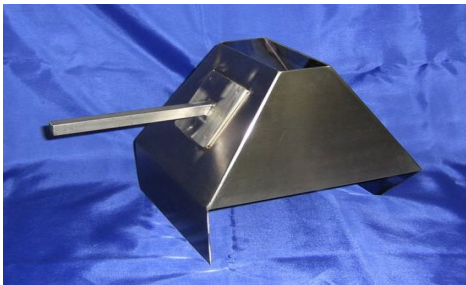
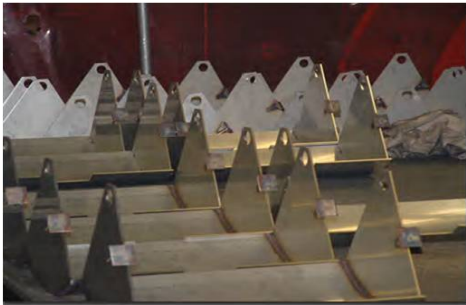
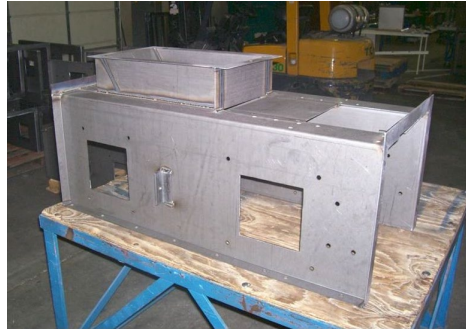
# Welding



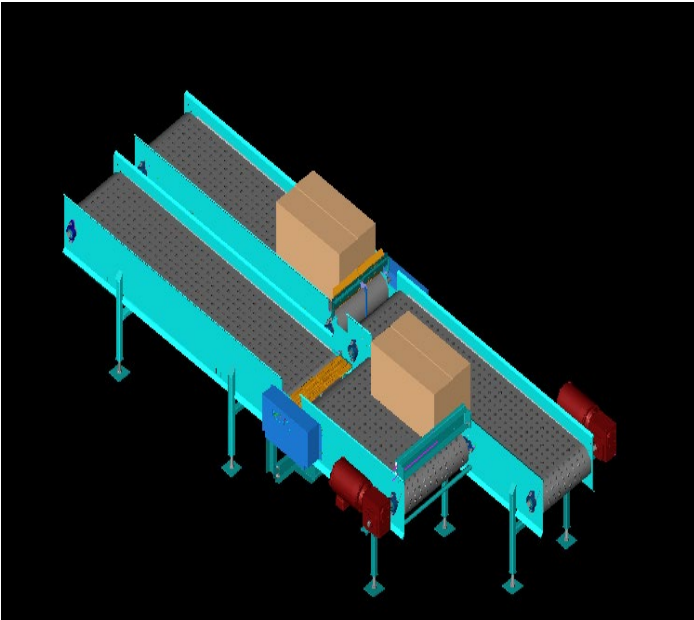
ALL GRADES of Stainless  
Steel Carbon Steel  
Mild Steel Aluminum, Brass  
and many alloy's







# DESIGN-MANUFACTURE-INSTALL-SERVICE



Custom designed for any material handling requirements.

Belt, Screw, Bucket, Vibratory & Drag Conveyors.

All stainless steel construction.

Stainless steel, polypropylene, acetyl, rubber and vinyl belt materials.

Electric or Hydraulic drives - Pneumatic holding gates

Automatic or manual systems

**USDA Accepted**



# Built to meet your needs.



# Blenders Mixers





# Chilling and Freezing



Finish Product Attributes

40% Purge Reduction

Reduces Refrigeration Costs vs. CO2

Extends Product Shelf Life with Rapid Temperature Reduction

Improves Product Quality

Better Color

Fresher Pork Flavor

Liquid Contact Chiller  
(Patented design)



Glycol Recon



Air-blast Freezer  
(Patented design)





# Specialty Cutting and Slicing Equipment

Multi-Blade Bandsaw



Dual Knife Slicer



Spiro-Cut Slicer



# Dumpers

Lift and Pivot



Stable no-spill lift action plus gentle product discharge.

Available as “Single Pivot Vat”, “Column” or “Barrel” dumper configurations.

Stainless steel construction with sanitation and dependability in mind.

Single Pivot



Barrel Dumper



Column Dumper