



Your Source of Palatability Solutions

Wing Biotech Overview

2020 Update



Who we are



- ◆ Established in 2007 with a total investment of around 30 million US dollars and more than 200 employees, **Wing Biotech** is a hi-technology firm specialized in pet food palatability solutions with integrated R&D, production and sales operations.
- ◆ The headquarter and R&D center are based in Shanghai, China. Wing Biotech focuses on pet food palatability solutions with leading research and development capability in pet food palatability enhancers as well as other health & nutrition pet food ingredients such as polypeptide meals and natural anti-oxidants in Asia.



Major Milestones



2007

Wing Biotech
established

2011

Yingtang plant
founded &
QS certified

2014

Yingtang plant obtains
export license to
South-East Asia

2017

Jiangsu plant starts
production
Jiangxi expert panel
starts operation

2018

Jiangsu plant obtains
export license to South-
East Asia, EU and Africa

2019

Yingtang plant
renamed as Wing
Biotech Jiangxi with
expanded capacity



Currently exporting to EU, South Korea, South East Korea, Middle East, Africa etc.



Sites & Facilities



R&D Center

- International and domestic experts in pet food manufacturing and palatability research
- Independent and strict R&D evaluation system
- Leading R&D capability in Asia



Expert Panel

- Located in Yingtan, China with 250 dogs and cats and 2000 m² of space.
- Palatability and functional tests conducted with rigorous approach provides reliable test data for both customers and R&D.



Wing Biotech Jiangxi

- Located in Yingtan with 43,000m² of space.
- Certified with pet feed ingredient production license, import & export permit and ISO 22000.



Wing Biotech Jiangsu

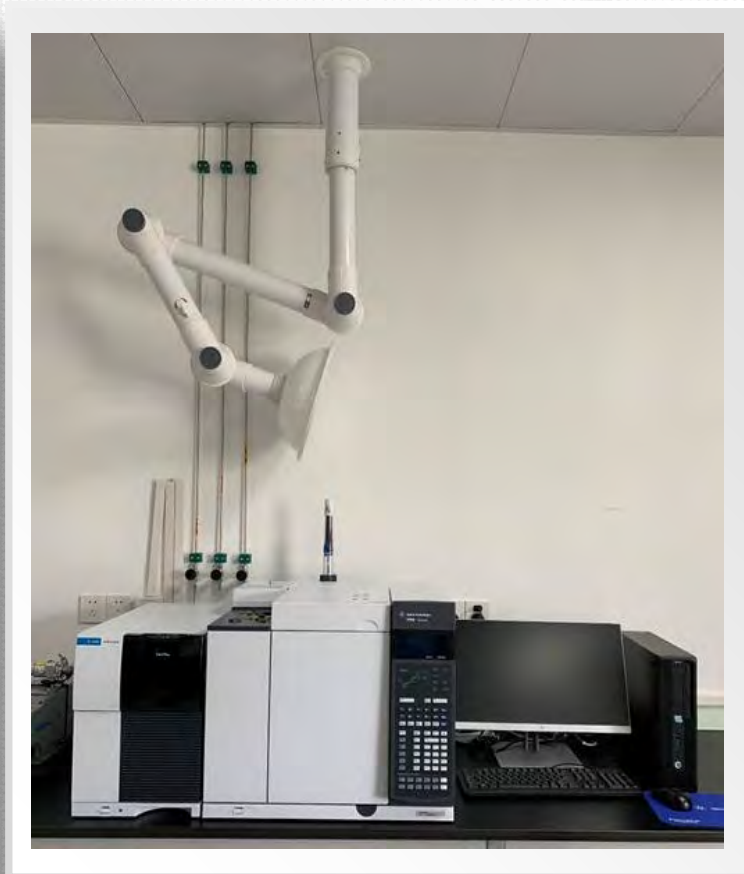
- Located in Changzhou, Jiangsu Province with 20,000m² of space.
- Automatic liquid and powder palatability enhancer production lines
- Stable production and consistent quality. ISO22000 certified



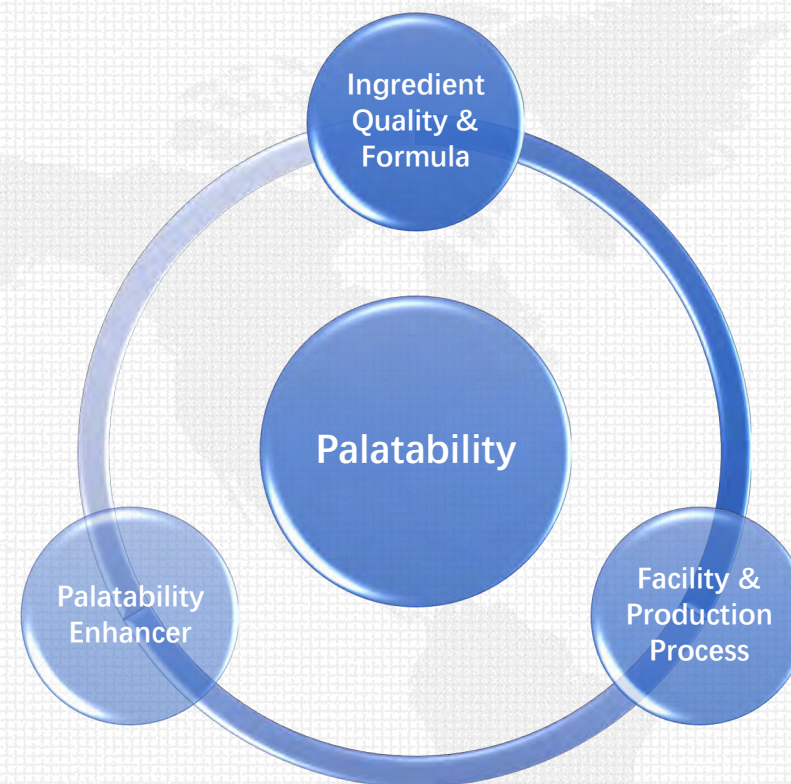
ISO 22000 Certificate
Including HACCP compliance



SMETA Certificate



- ◆ Professional R&D team with **over 10 years** of pet food research & development experience led by seasoned **international palatability expert**. The staff comprises mainly scientists with PhD and Master degrees.
- ◆ Under the premise of maintaining stable quality of existing products, Wing Biotech launches new products with higher performance levels almost every year. Each new product goes through **dozens / hundreds of formula trials and thousands of experiments** before the official launch to ensure the palatability performance.
- ◆ Each year at least **3%** of annual sales revenue is dedicated to R&D.



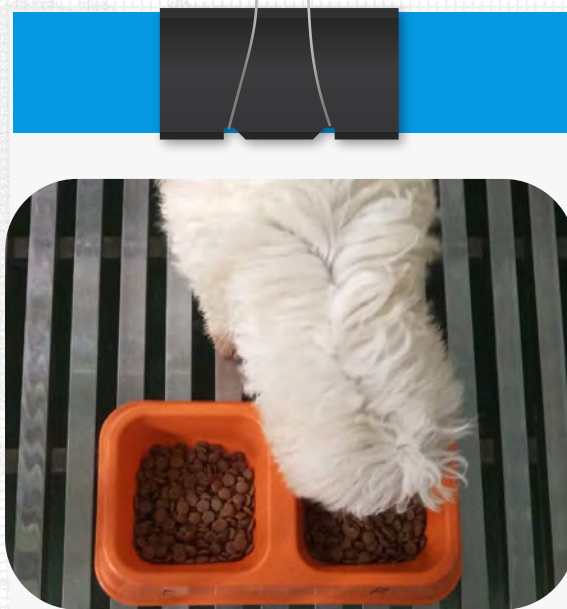
2000m² of expert panel is located in Yingtian, Jiangxi Province with around 150 dogs and 100 cats that are well-trained and cared with systematic approach and ethical compliance. Palatability and functional tests are conducted so as to provide reliable test results to help customers make key product development decisions. At the same time, we encourage customers to do their own palatability test if possible for double confirmation.



Palatability Tests



Weighing & Record



Versus Test



Statistical Analysis

Multiple palatability tests are conducted to verify test results.

Scientific test methods are adopted.

Dog and cats are fed and cared using systematic approach.



Wing Biotech understands the importance of food safety and quality to customers. Considering the special nature of animal ingredients, Wing Biotech guarantees that:

- No ingredients without labels and no 4D meat are used.
- All ingredients can only be used after being approved by inspection and quarantine according to ingredient specification.
- Based on ISO22000 protocol, each batch of ingredients is inspected and tested based on strict quality standards from arrival to manufacturing process.
- All ingredient handlers, time and dosages are recorded by implementing full traceability quality management so that each batch of product is traceable in terms of raw material lot numbers, operators and CCP data.



Sample Retention



Samples of each batch are kept for up to 15 months for traceability purpose and stability study.



In-house Labs

WING BIOTECH





Three ranges of palatability enhancers are specifically designed to increase the acceptance of **dry dog/cat food and pet treats**.

Different flavors and colors are developed to meet the specific needs of pet food manufacturers to develop eco, standard, premium and super premium pet food products in terms of protein claims, flavor and cosmetics.

D'PAL range - dry dog food



C'PAL range - dry cat food



U'PAL range - pet treats





Wing Biotech believes in



Our success lies in “Integrity, Profession, Service and Win-Win” idea.

We strive to continuously improve product performance and benefit our customers, which is the key for our success!



Thank you
for your attention

WING BIOTECH (SHANGHAI) CO., LTD.

Address: B-416, No.189, Xijunhuan Road, Caohejing I & E Park
Shanghai 201114, China

Tel: +86-21-58082757 **Tel:** +86-21-58085120

Website: <http://en.wing-bio.com/>