

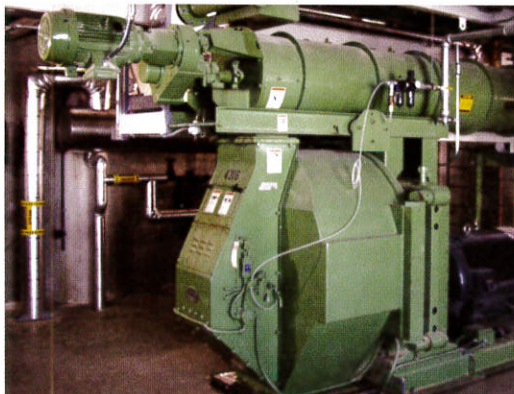
# RENOVATION

Like most businesses, you may not need to construct a new facility but are seeking solutions to make your business run better. You may be considering a renovation to improve utilization of existing assets, improve manufacturing costs, implement a process change, increase capacity, or find an efficient way to adapt to new quality improvement standards. No matter the reason, a renovation is a big undertaking and nobody can assist you like WL Port-Land Systems with its collaborative approach to your project. With our expertise spanning the engineering, construction, operations and maintenance areas, WL Port-Land Systems rises above the competition. We can help you to weather the shutdown and minimize the interruption to your operation through methodical project planning and execution. Rooted in the engineering field since 1975, WL Port-Land Systems, while applying years of operations and construction experience, offers a diverse expertise to provide solutions for your design/build, engineering and renovation projects.

## WHAT DRIVES RENOVATION?

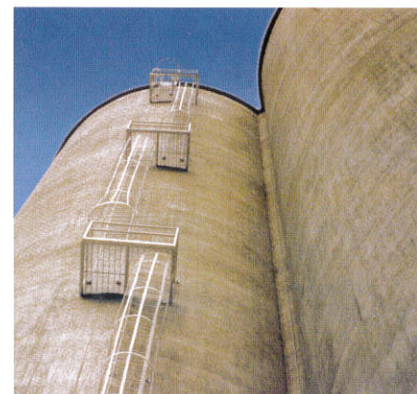
- **MAXIMIZING UTILIZATION OF EXISTING ASSETS**
  - Cycle time for batching and mixing
  - Increase pounds per horsepower per hour
  - Reduce change over time
  - Increase pelleting capacity
  - Time of use demands
  - Decrease maintenance downtime
- **MANUFACTURING COST IMPROVEMENT**
  - Energy efficiencies
  - Reduce labor hours
- **INCREASING CAPACITY**
  - Through a complete facility evaluation, develop a plan to meet objectives
  - Unit train receiving requirements
- **QUALITY IMPROVEMENT REQUIREMENTS**
  - Pellet durability index (PDI)
  - Crumble quality
  - Gelatinization
  - Feed conversion
- **IMPLEMENTING NEW PROCESSES**
  - Enzyme applications
  - Blending cracked corn in finish feed
  - Post pellet liquid application
  - Blending of finish feed

## CASE STUDY: INTEGRATED POULTRY COMPANY



The facility was experiencing lower than desired gelatinization on its finished pelleted feed. WL Port-Land Systems worked to analyze both field data and the operation of the entire system. The analysis resulted in a need to make adjustments to the boiler pressure and steam harness pressure settings, increasing the conditioned mash moisture, resulting in improved gelatinization.

## CASE STUDY: INTEGRATED POULTRY COMPANY



Operation needed to consolidate the number of operating feed mills requiring improved efficiency and increased utilization of one of its central facilities. Through a collaborative effort with the facility owner, WL Port-Land Systems created a detailed renovation plan including goals, scope of work, costs and required downtime. With production continuing, the resultant work enabled the customer to increase production capacity by 50 percent, while incorporating features to improve feed manufacturing efficiencies and feed quality.