

Newell Automation



Controls and Automation Products and Services

www.newellautomation.com

Understanding the Purpose Behind the Process

Process Control
CIP/COP
System Integration
Batching
Material Handling
System Alarm Management
Recipe Management
Reporting

PLC design and programming

Programmable logic controllers (PLCs) increase the consistency of a process and product and improve productivity through real-time monitoring and stability correction. Common applications include flow, speed, temperature and/or pressure control. From simple start/stop functionality of a motor to full CIP cycle programs, PLCs provide simple control of complex processes. Our systems come fully functional and tested.

What We Do

Our team understands the requirements of sanitary processing. If you need batch history, SCADA, recipe management, process data collection, or data harvesting and manipulation, we can work with you to meet all local and federal requirements, including PMO or 3A certification.



Process Integration—both Large and Small

From conceptual design to installation and start-up, our engineers and technicians will develop and validate a system that meets your requirements.

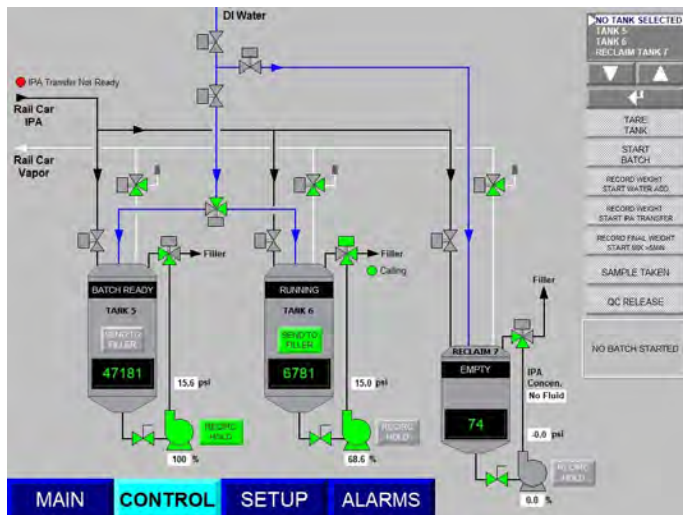
HMI design and programming

Switches, keypads, computer monitors and built-in touchscreens are examples of human-machine interfaces (HMIs). These interfaces provide graphical, user-friendly display and operator control of the process. Our team can integrate an HMI to help you track your production, monitor batch recipes or provide other mechanical performance details.

Controllers and software

Our team supports a wide range of HMI programming software including the Allen-Bradley PanelView and FactoryTalk series, Wonderware, Siemens and Ignition by Inductive Automation. Our goal is to provide critical information to the operator in a simple, clean and optimized format. Configurations can be easily designed for point-and-click I/O and/or system monitoring. Password-controlled screens can be added to prevent erroneous changes to a batch recipe or process.

In addition to monitoring process information, HMI's can be used to connect with SCADA systems, all within the same console. These high-performance platforms allow you and your operators to connect your production processes into an integrated plant-wide system.



Working along with our process engineers, our controls team will identify the appropriate instrumentation and control functionality for your process. User-friendly integration provides users with functional control of data collection and management, maintenance management, operations scheduling and product quality management.

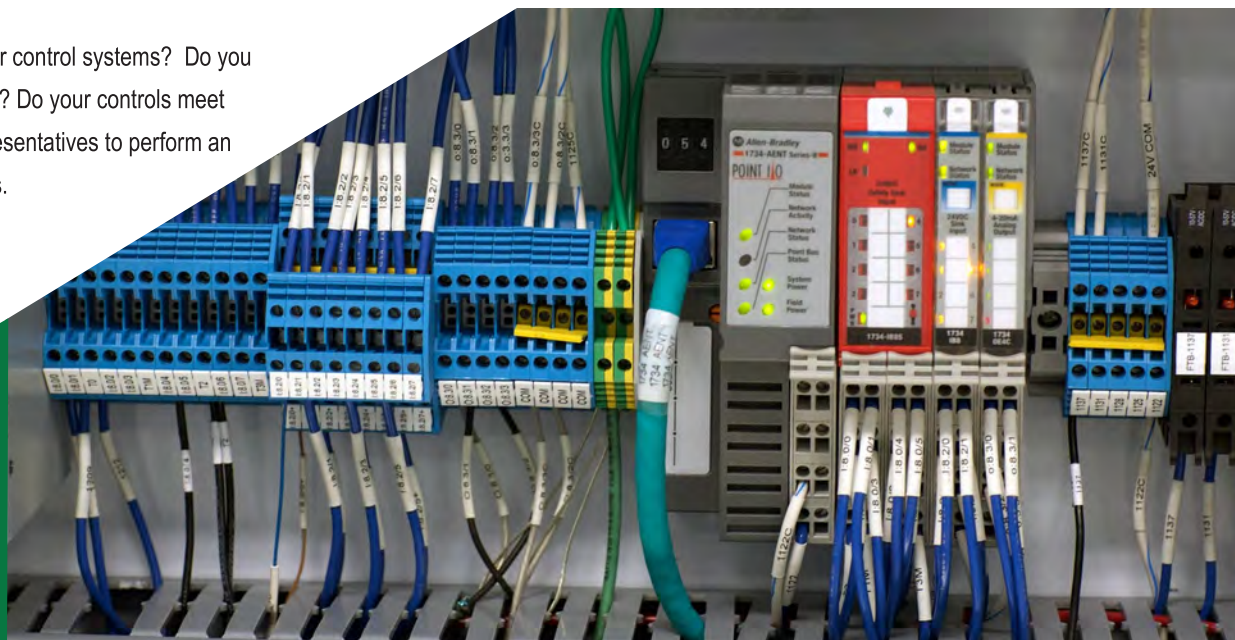
Retrofits and Audits

Retrofits

Outdated systems, such as the Rockwell's SLC and PLC5 platforms, will become increasingly expensive to maintain. Rather than continuing to pay for discontinued parts and service, it may make sense to upgrade your system. Contact one of our representatives to help you assess, plan and implement a migration strategy.

Audits

Need an impartial assessment of your control systems? Do you wish your controls were more flexible? Do your controls meet NFPA guidelines? Contact our representatives to perform an audit to answer any of your questions.



Control panel design & fabrication

Our control panels are designed and built in a **UL-508A certified panel shop** with safety in mind. Panels can be designed to meet NFPA, NEC and UL-508 regulations. Panel access doors can be designed to automatically shut down power if the panel is opened. All electrical panels are Lock-Out, Tag-Out compatible. Other options include variable frequency drives (VFDs), motor starters, air solenoid valves, NEMA 4x and explosion proof panels to name a few.

Documentation

Each system designed and fabricated by our engineers comes with documentation to support the end-user. Project books are prepared and include the schematics and drawings for your system. Other documentation includes:

- Bill of Materials for instrumentation
- Operating manuals for all instrumentation
- Instrument configurations and settings
- FAT test results (when required)
- 3rd party certifications (when required)



Training and support

Operator training is included with all system designs and fabrications including process monitoring, new process entry and recipe entry.

On-going support can also be provided for any system changes or upgrades or in the case of network, process or hardware failures. This support can be on-site or on-line in some cases.

Need more information?

Email us at sales@mgnewell.com,

contact one of our locations or

visit www.newellautomation.com

**Greensboro Division/
Corporate Headquarters**
301 Citation Court
Greensboro, NC 27409
336-393-0100

Louisville Division
4400 Bishop Lane, Suite 112
Louisville, KY 40218
502-459-7475

Nashville Division
334 Free Hill Road, Suite B
Hendersonville, TN 37075
615-822-3030

www.mgnewell.com

sales@mgnewell.com

www.newellautomation.com