

# TUBULAR DRAG CONVEYOR

A QUIET AND RELIABLE PERFORMER.



**01** Convey product in a completely sealed system.

The sprocket drive pulls a heavy-duty chain and flight assembly through a fully enclosed casing, moving material through the pipe without separating or degrading product and prevents dusting.

**03** Use less energy than other conveyors.

The low horsepower motor produces the steady drag that cuts your unit energy costs.

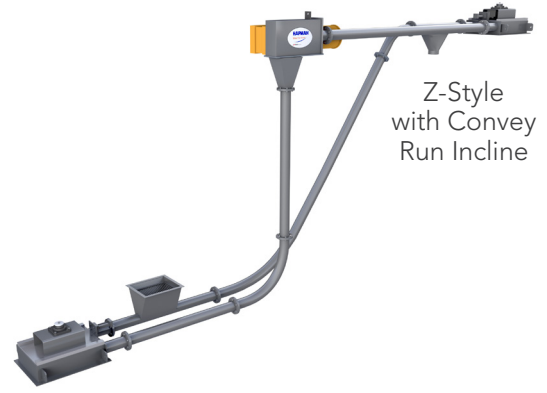
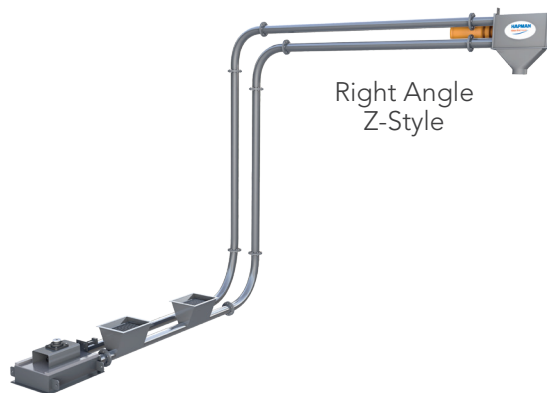
**02** Move challenging materials.

Convey high-moisture, abrasive, blended, friable, easy-to-compact, large particle, or materials that smear without compromising quality.

**04** One conveyor does the work of many.

Configure the tubular drag to convey product vertically, horizontally, at any angle and around corners. Inlets and outlets can be configured where needed.

## Configuration Examples

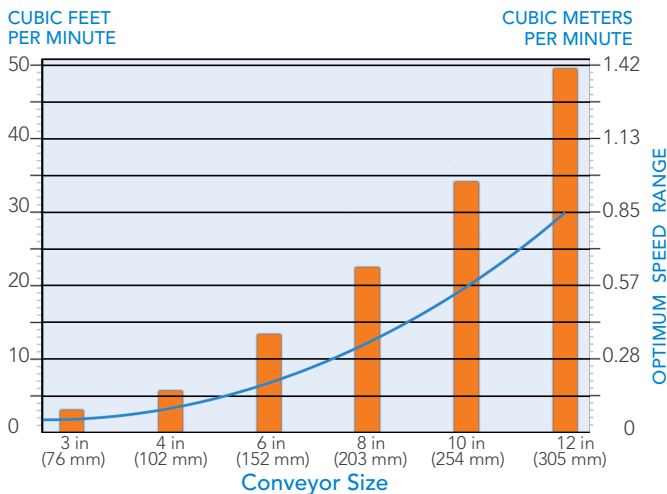


**HAPMAN**

Ideas that move.

## Specifications

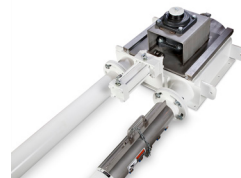
PIPE CASING DIAMETER	3 in (76 mm) to 12 in (300 mm) diameter. See graph.
PIPE CASING MATERIAL	Carbon steel Stainless steel
CHAIN MATERIAL	Carbon steel Stainless steel
CIRCULAR FLIGHTS	Cast iron, ductile iron, nylon, stainless steel, UHMW polyethylene, Tivar® H.O.T. premium UHMW polyethylene or custom
MAXIMUM CONVEYANCE DISTANCE	85 ft vertically (26 m) 400 ft horizontally (122 m)



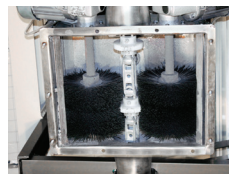
## Options



Prevent material from getting trapped with Hapman's exclusive Self-Cleaning Discharge Gate that opens and closes in position to allow full discharge of material.



Patented air-over-hydraulic auto tensioner mitigates unplanned downtime and dramatically reduces maintenance. Built-in sensors automatically keep the chain at optimum performance, even under varying loads.



Effectively removes stuck material from flights and chain with dual spinning brushes that prevent carryover, and facilitate full material discharge from conveyor. Other cleaning options available, such as air knife and vibration box.



Hapman engineers will select the correct chain and flight design combination to meet your specific process and material requirements. Hapman offers link and pin type chains, which are less prone to fatigue and wear, and stretch less than steel cables. Also available are Hapman's exclusive rivetless and seal-pin chain options to fit a wider array of applications.

*Ask about our free material testing!*

Hapman offers a complete line of material handling equipment that easily integrates into existing systems, including:

- Flexible Screw Conveyors
- Tubular Drag Conveyors
- Vacuum Conveyors
- Feeders
- Bulk Bag Unloaders
- Bulk Bag Fillers
- Bag Dump Stations
- Lump Breakers
- And More



**Eric Smith**  
Product Specialist  
(269) 382-8238  
eric.smith@hapman.com

**HAPMAN**  
Ideas that move



sales@hapman.com  
www.hapman.com



5944 East N Avenue  
Kalamazoo, MI 49048  
(800) 427-6260

