

HandAddsFeedersCampaignsToolsSecurity

KeyboardHelpExit

NorthWind Premix

Product: Plastic Premix

Batches

Current5

Requested10

Completed4

CancelEndPrint Label

RUNNING IN SIMULATION MODE

Ingredient	Setpoint	Actual	Lot #	Low Fault Tol	Low Alarm Tol	High Alarm Tol	High F
Pigment B	20.0 (lbs)	19.0 (lbs)	15786	2.0000	1.0000	1.0000	2.0

Cell 1

Complete

3:06 / 2:49

Scaling Ingredient

Pigment B

456

Lot Number15786

Scan MateLot OK

Scale Ingredient: Pigment B

Step8

Setpoint - (lb):20.0000

Actual - (lb):19.0

Tare-2.0-5.0-10.0

Scaling

17181920212223

Accept+2.0+5.0+10.0

BatchMATE® - Micro Ingredient Batching

Minimize the time and effort it takes to accurately store lot numbers and weigh ingredients on the plant floor.

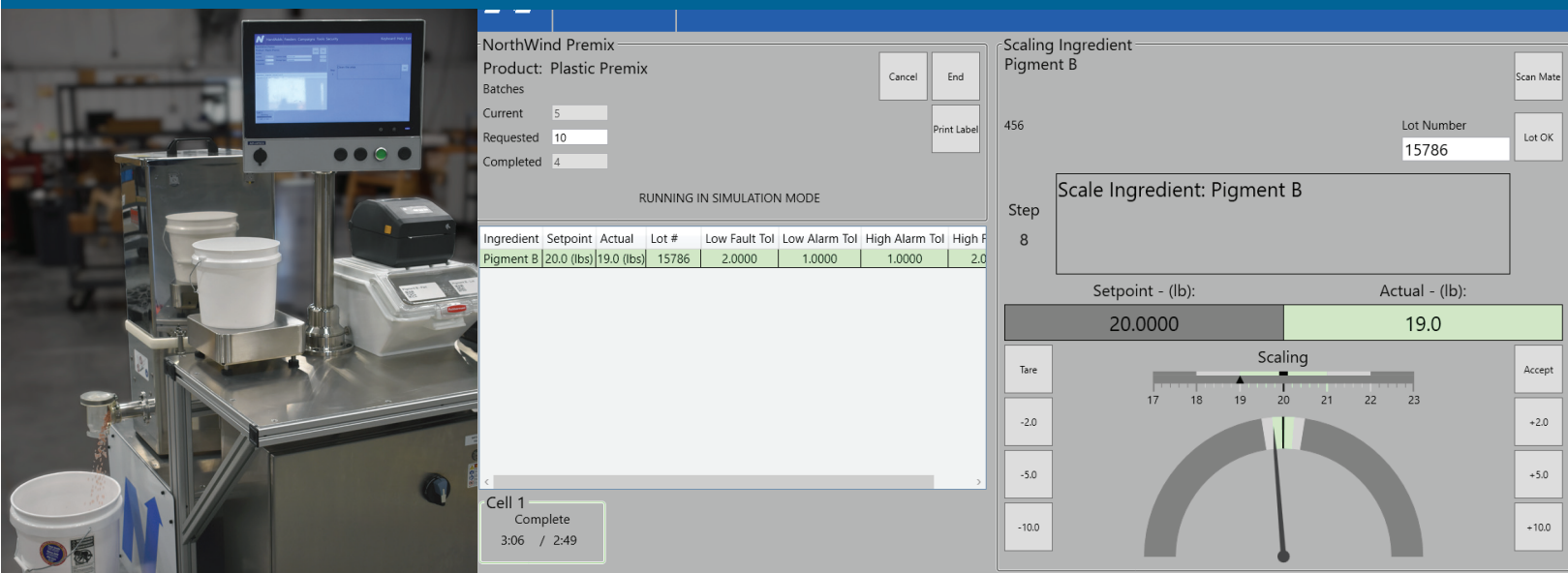


Micro Ingredient Batching

With BatchMATE®, minimize the time and effort of accurately storing lot numbers and weighing ingredients on the plant floor. Whether you are pre-batching kits or dosing directly into production, BatchMATE provides solutions that connect this island to the rest of the plant.

Hand adding ingredients is often an error-prone step in the manufacturing process. The most common errors include mistakenly recording lot numbers, adding the wrong ingredient, and inaccurately scaling ingredients. These simple mistakes cause an inconsistency in your product. BatchMATE was designed to eliminate these errors while quickly guiding the operator through the weighment process.

BatchMATE's Feeder option adds labor savings and consistent accuracy to some or even all these hand weigh ingredients. Hand filled feeders will automatically and reliably weigh up each ingredient into a container, limiting the workload on the operator to dumping the container in the mixer and refilling feeders.

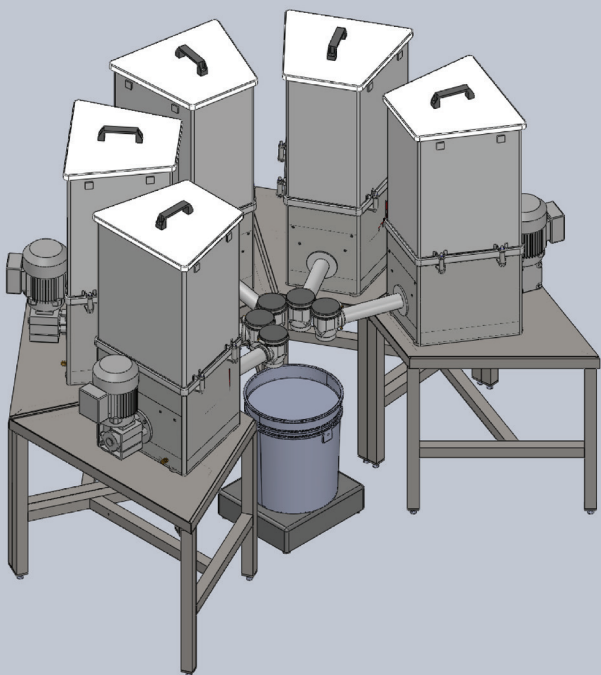


Lot Tracking

Lot numbers are scanned immediately following the ingredient IDs. A unique code is assigned to each campaign and is printed to be placed on the campaign bucket. Prior to adding the weighment to the batch, the operator will scan the code, recording all ingredients and lot numbers in BatchLOGIX.

Recipe Management

BatchMATE integrates with your recipe management system. When you release a campaign, BatchMATE downloads the recipe and is ready for the operator to fulfill the order.



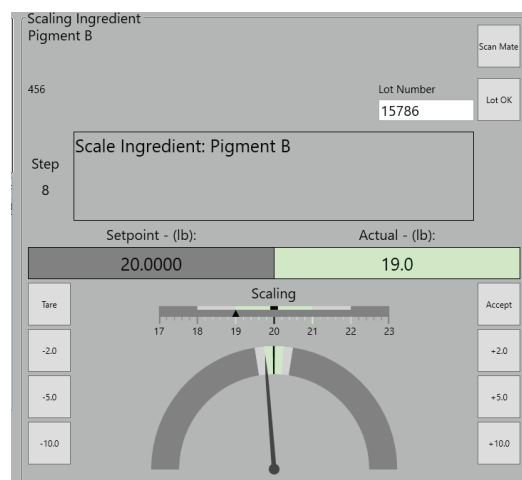
Integrating Feeders

BatchMATE seamlessly integrates feeders into the hand batching process, operating concurrently or stand-alone with manual weighments. This compact design serves as a suitable replacement for full Minors systems, positioned conveniently close to mixers. The integration of automatic feeders enhances efficiency and precision, optimizing operational workflows.

With feeder availability in both LIW and GIW versions, this solution is designed make micro ingredient inclusions more efficient for any process.

Weighments

BatchMATE can be configured with multiple scales of different capacities and resolutions to maintain specific ingredient tolerances. This allows for versatile configurations and allows the system to encompass different sets of ingredients.



BatchLOGIX®

BatchMATE works seamlessly with BatchLOGIX allowing all of the advantages of recipe management, lot tracking, batch historian, and reporting to be interpreted across all the manual and automated equipment on the plant floor.



The AI Platform helping Manufacturers reach and exceed their production goals.

PlantIQ Agent

PlantIQ Agent is a digital expert powered by generative AI and manufacturing-specific LLMs, offering solutions and recommendations to help operators and support engineers solve problems.

Knowledge Base

The knowledge base compiles SOPs, manuals, training materials, transcriptions, process data, service tickets, and more. It continuously evolves through user interactions and feedback, improving the quality of answers over time.

Alarm Module

The Alarms module leverages generative AI to interpret PLC and SCADA alerts, offering focused insights into system faults. It accelerates resolution through historical analysis, process data, and service ticket context.



How Can AI Help Your Business?

PlantIQ is a buildable, customizable platform designed to fit your needs. Its modular design allows additional tools like intelligent scheduling, logistics management, and machine learning to be developed for and tailored to your operation.



Thank you for your interest in NorthWind. We are committed to helping our customers improve their process through automation & cutting edge design. For more information please call or visit us on the web at:

785.284.0080

www.northwindts.com