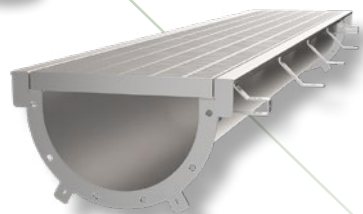
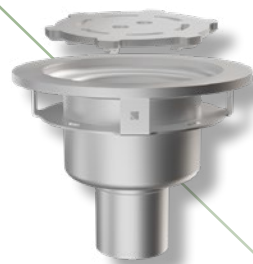
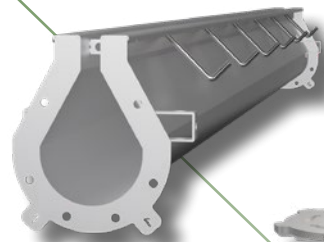


PRODUCT CATALOGUE

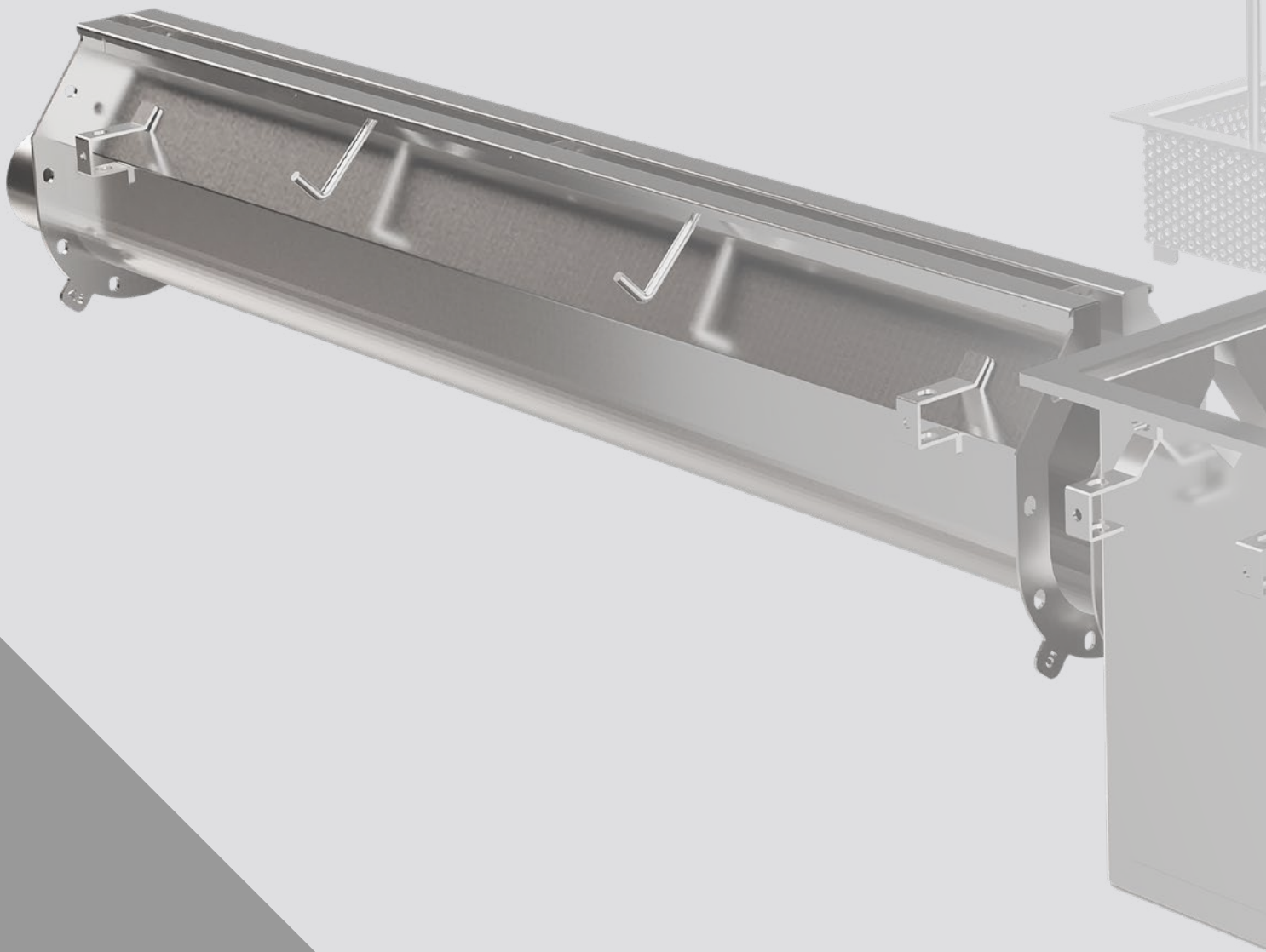
DRAINS DESIGNED
AND BUILT FOR THE
FOOD & BEVERAGE
INDUSTRY



FOODSAFE
DRAINS



SMART, SAFE, AND SANITARY DRAIN SYSTEMS





Easy to specify and install; FoodSafe Drains is the best choice for your facility's drainage.

When you choose FoodSafe drains, you get more than just a floor drain. Our team of drainage experts assist with every step of the planning process. If you need support at any point, our application engineering team is always available to assist, and answer any questions you might have. FoodSafe drains are easy to specify and install - from beginning to end we make choosing quality drains for your facility as stress-free as possible.

ABOUT FOODSAFE DRAINS


As a food industry professional, we know your number one priority is maintaining a clean and risk-free environment. That's why we build drainage systems that are sanitary and safe - no matter how busy you get. Drains matter - they are the most used equipment in your facility. Drainage systems bear the brunt of constant traffic, experience non-stop usage, and have to stay clean, even on your busiest day. We have made it our goal to be the solution to your drainage problem. How? With stainless-steel drains that stand up to the roughest wear, keeps both your floor and your product bacteria free, and above all are fast and easy to clean.

We have been supplying drains to the food industry for well over two decades now, and in that time we have learned a lot about the specific needs of the sector. We are constantly innovating our products based upon real world knowledge that we have gathered first-hand. By choosing a FoodSafe Drainage System for your facility, you are getting a product specially designed to help solve your industry specific challenges.

What Makes a **FoodSafe Drain** a Food Safe Drain?

All drains conform to the same Food Safe design and fabrication principles as per ANSI A.197-3.11 and the BS EN 1672 and BS EN14159:

- ✓ Designed to prevent sanitation risk or contamination.
- ✓ All surfaces are sloped preventing standing water.
- ✓ Surfaces are free of imperfections. No cracks, crevices, or chips.
- ✓ Fabrication is free of debris, burn, burrs, and overlapping joints.
- ✓ All radii over 5mm, no 90° angles, and no corner welds.



Effective sanitation
is a key to health and
safety, quality and
profitability.

— THE CLEANER, THE BETTER

Save money, save time, reduce risk.

On the modern food production floor, cleanliness is a top priority consideration. Compromised product creates immediate losses and costs and carries long-term risks. In this type of environment, you want someone in your corner who knows the challenges that come with maintaining a sanitary food-space. Our systems are specially designed to minimize the chances of microbial threat and makes cleaning a breeze.

FOODSAFE® FEATURES AND BENEFITS



SANITARY



EASY TO CLEAN



HANDLES EXTREME
TEMPERATURE



LOAD CLASS
RATED



CORROSION
RESISTANT



CONTROLS
ODOUR

TYPE OF APPLICATIONS



— Dairy Facilities



— Slaughterhouses



— Processing Plants



— Brewery / Winery



Bell & Evans



CLEMENS
FOOD GROUP



Nestlé

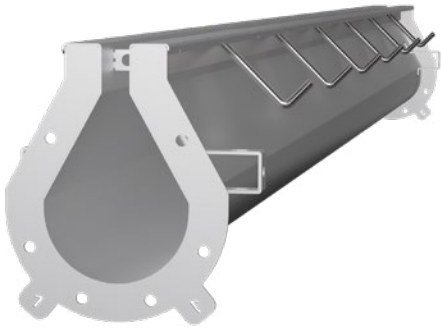




Not sure why I didn't
install these drains to
begin with. These drains
are functional and easy
to use. Can't wait till our
inspectors see these.

David Lillard, Mercier Orchards

FOODSAFE SLOT DRAIN® SERIES



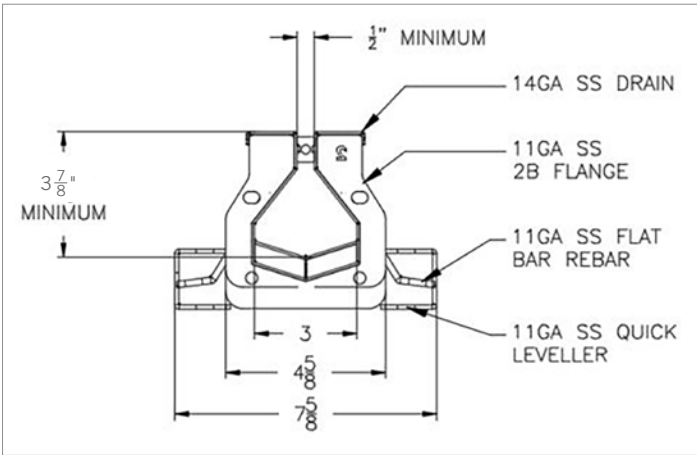
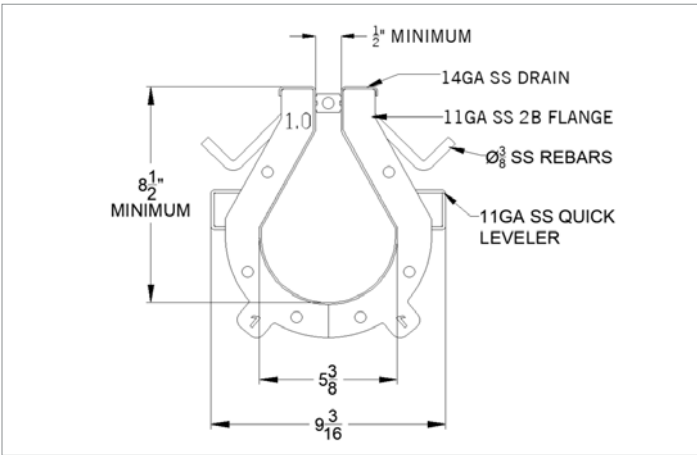
10,000 SERIES FOODSAFE SLOT DRAIN®

The 10,000 Series FoodSafe Slot Drain® is our newest, easy-to-clean product. Designed for the highest-regulated food processing facilities, this heavy duty load-bearing drainage system offers our smoothest design ever for complete drainage sanitation. Constructed from T304 or T316 stainless steel, this drainage system is efficient to clean, making the maintenance of a hygienic production area a breeze.



6,000 PLUS SERIES FOODSAFE SLOT DRAIN®

6000 PLUS Series FoodSafe Slot Drain® is a cost effective stainless steel surface drainage system. Inverts start at 3⁷/₈". It is applied often in pedestrian or light traffic areas or facilities that do not have a high volume of liquid to distribute. The 6000 PLUS-RS model is also available for heavy load rated and hygienic environments. Constructed from T304 or T316 stainless steel.

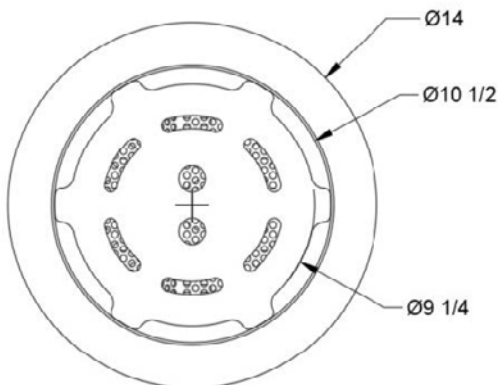


FOODSAFE AREA DRAIN

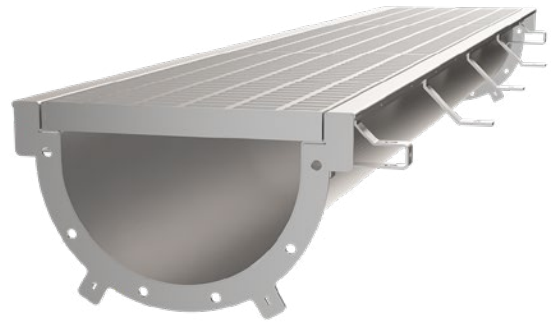


FOODSAFE AREA DRAIN

The FoodSafe Area Drain is radiused stainless steel drainage system designed to eliminate standing water easily and hygienically. Our special 'Tamper-Proof' strainer ensures that only authorized personnel have full access to the system, ensuring your facility remains both safe and secure. Our area drain lids are designed to satisfy heavy duty load class requirements.

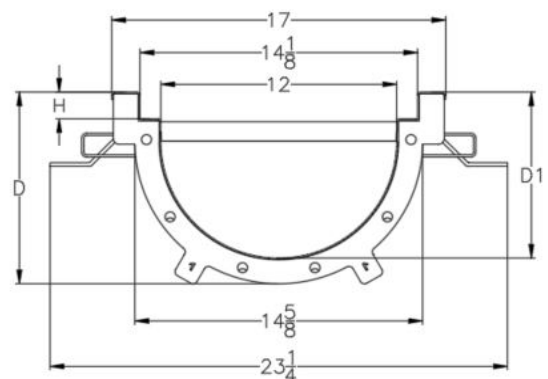


FOODSAFE TRENCH DRAIN



FOODSAFE TRENCH DRAIN

Our FoodSafe Trench Drain is your go-to when it comes to removing solids from a production area, without fear of a clogged drain. Constructed from stainless steel, this option provides full access to the drainage channel, while the floor-level grating provides a safe, trip-free working space. Grates are designed based upon industry standards and load class needs, to satisfy customer requirements.

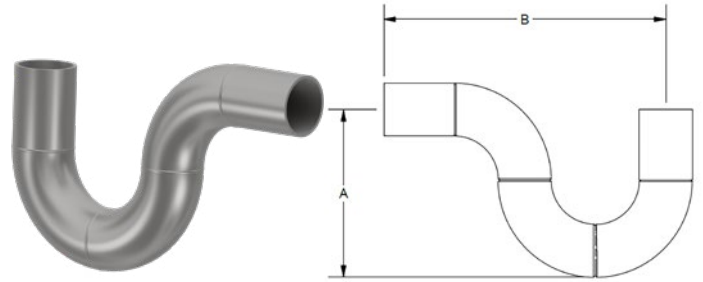


FLOOR SINKS



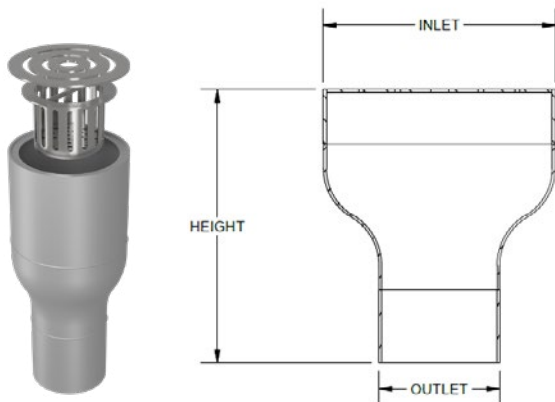
Floor Sinks are constructed from either T304 or T316 stainless steel material, and are available as 8x8, 10x10, 12x12 and other custom sizes. The standard outlet size for any Floor Sinks is 4", additional outlet sizes can be built as needed. Floor Sinks come with a grate style lid cover and are designed to withstand heavy duty loads. It features a specialized tamper-proof magnetic lock mechanism for the secondary strainer basket.

P-TRAP / RUNNING TRAP



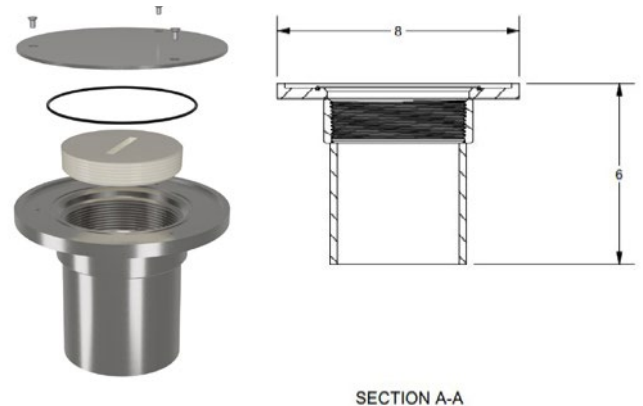
P-Traps and Running Traps are used to prevent sewer gas from entering your facility via the Catch Basin drain outlets. Our traps are manufactured using food-grade stainless steel, and are recommended for use with all FoodSafe Catch basins: P-Trap for any vertical/bottom outlet connections, and Running Trap for horizontal/side outlet connections. P-trap and running trap is designed to match with the pipe diameter of 3", 4", 6" and pipe schedule of 10 or 40.

HUB DRAIN



The FoodSafe Hub Drain is the drainage system of choice for when your facility layout requires multiple entry lines. Our Hub Drains are made using food-grade T304/T316 stainless steel. We manufacture a variety of inlet and outlet diameters, and can be used with either a pipe schedule of either 10 or 40.

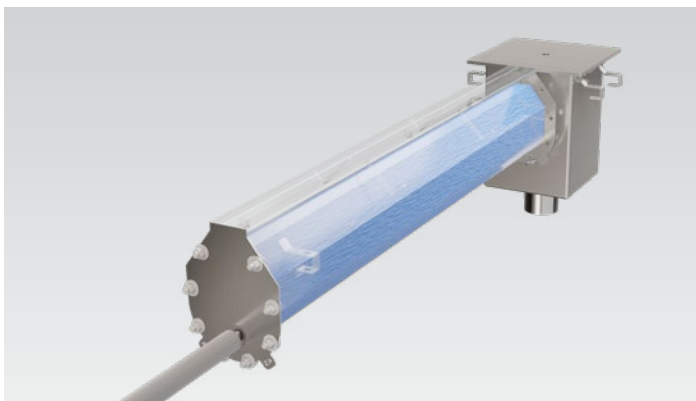
FLOOR CLEAN OUT



Our FoodSafe Clean Out allows easy access to your underground drainage system, giving you a way to clear any clogging or debris that may occur in the line. We manufacture using food-grade T304/T316 stainless steel, and can be used standard with either a pipe schedule of 10 or 40.

— SAVE TIME AND MONEY

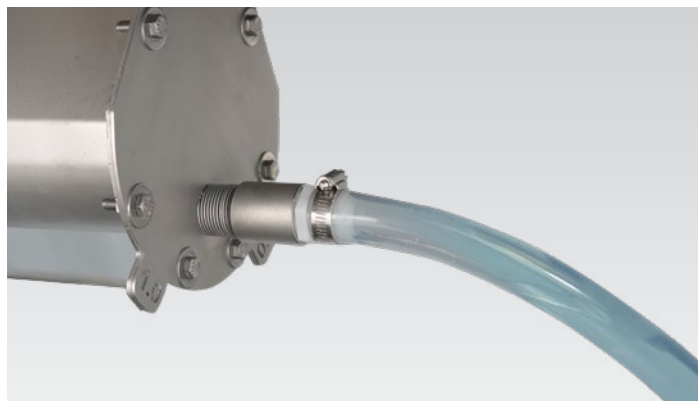
Adopt a whole facility sanitation approach with cleaning tools designed exclusively for FoodSafe Drains. Exceed hygiene standards and improve efficiency with this durable & functional line of cleaning products.



CLEAN IN PLACE (CIP)

CIP is a method of cleaning that is commonly used in hygiene critical industries, such as food and beverage processing, dairy, and brewing.

Clean-in-place allows you to seal the drain so that it can be filled with a cleaning agent and left to soak, removing built up debris and grime from the inside of the system.



FREQUENT CLEANING — FLUSH FLO™

This system provides a permanent connection to a water line via a 1" NPT threaded connection. The system allows facility operators to flush their Slot Drain Systems of accumulated debris quickly and easily and can be operated manually or attached to a timer.

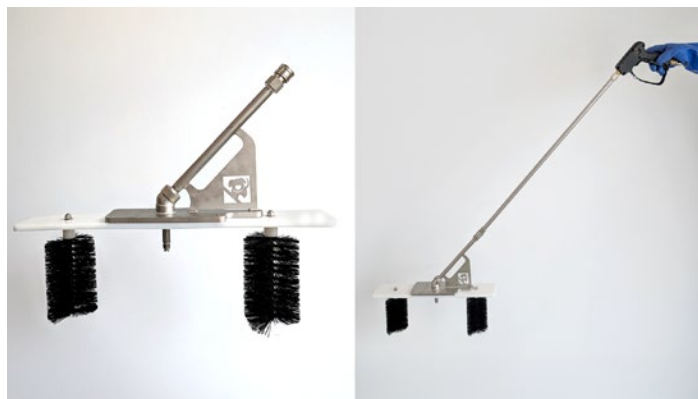
Flush Flo™ is especially suitable for facilities that require frequent cleaning, such as food processing plants, seafood markets, etc.



REGULAR CLEANING — CLEANING PADDLE & BRUSH

The cleaning paddle features food grade construction with a T304 Stainless Steel frame and a flexible epoxy coating. You just insert the paddle, twist 90 degrees and move it along the drain to clear the debris.

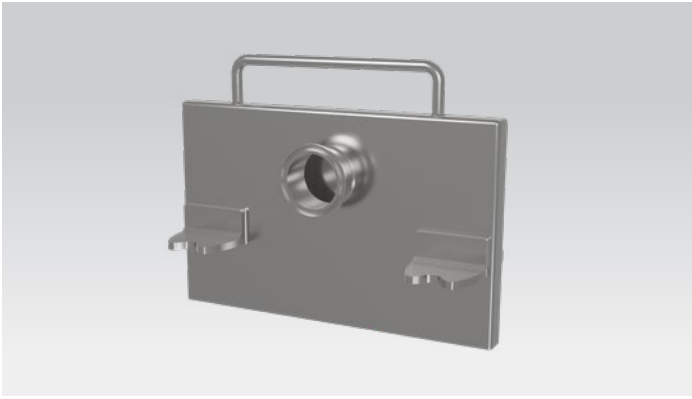
The flexible and durable cleaning brush is built to conform to the inside of your slot drain for a thorough and hygienic clean. Trappings are then removed from the strainer basket.



SLOT DOG

The Slot Dog is a complete high-pressure water-based Slot Drain Cleaning tool, designed to clean the inside of the slot drain channel. The Slot Dog isolates water below grade preventing wet, slippery floors. Protect your floors while creating a safe and clean environment.

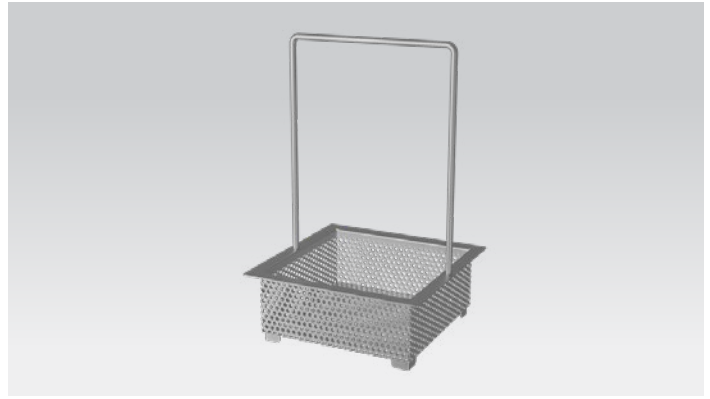
Engineered nozzle disperses a spray pattern that thoroughly cleans the entire interior of the drain.



SLOT HOG

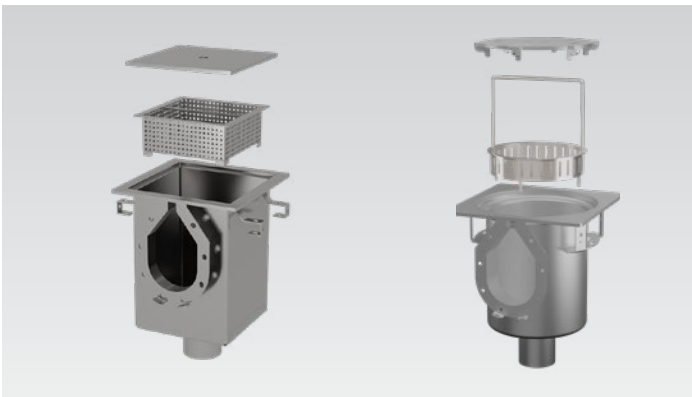
The Slot Hog is a hose connector that lets you drain your tanks directly into the Slot Drain Channel. Just connect to the tri-clamp, slip the Slot Hog into the slot, and empty without the mess.

The Slot Hog easily slides along the Slot Drain Channel, so you can empty every tank without spilling, allowing the drains to do their job while keeping your floors clean and safe.



STRAINER BASKET

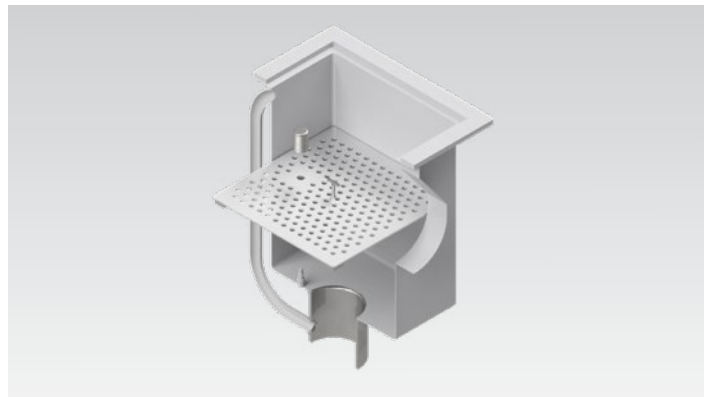
The strainer basket's 1/4-inch perforated holes trap stones, keys, rings and other items that are smaller than the slot opening, that you want to intercept. Made of stainless steel, it is designed to last for the life of your system.



CATCH BASIN / CIRCULAR CATCH BASIN

Catch basins are designed to be receptacles for retrieving any items that may inadvertently go into the drain on either our Trench Drain or Slot Drain systems.

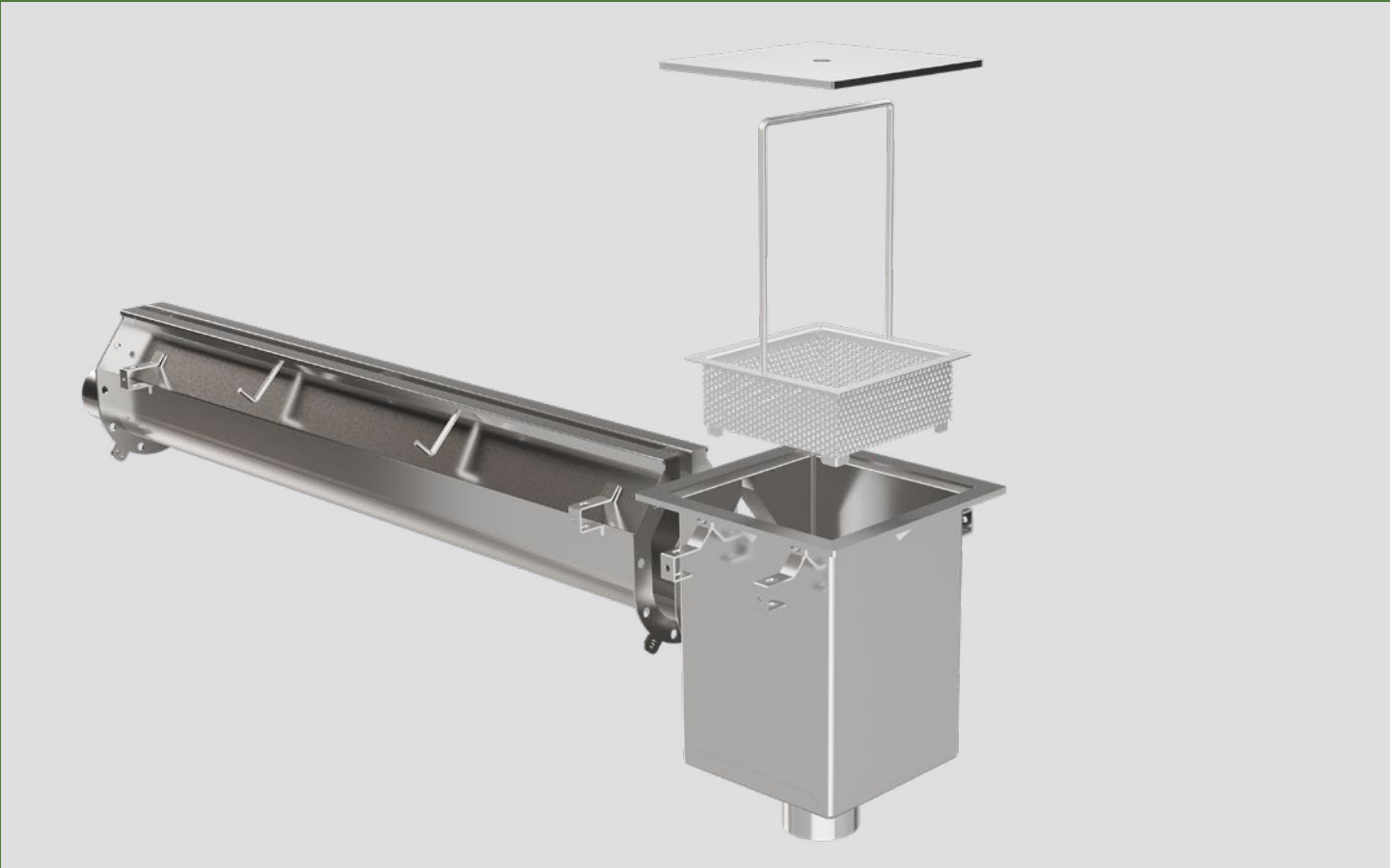
A 3/8" T304 stainless lid sits atop the base. Basins come in 6" x 6", 6" x 12" or 12" x 12" standard sizes with 12" or 20" deep. We can also customize the basin size according to the requirements. The basins come with quick levelers which help to insert threaded rod and set the basins at the proper level and also to tie the horizontal rebar parallel to the basins to withstand heavy duty traffic loads.



TAMPER PROOF MAG-SAFE LOCK

Constructed from T304 or T316 stainless steel, the strainer and lock were designed without harbor points where bacteria can hide, keeping your drains as sanitary and hygienic as possible. With our specialized strainer, you can ensure access to your system is limited to people you trust. Using a magnetic lock and key system, the strainer can only be removed by individuals with access to our specialized key.

SPECIFICATIONS — 10,000 SERIES CATCH BASIN



MEASUREMENTS	STAINLESS
Top Width	12"
Top Length	12"
Bottom Width	12"
Bottom Length	12"
Height	17 1/8" or 20 7/8"
Outlet Size	4" or 6"
Outer Edge of Frame	15"

- Catch basins are constructed from stainless steel as 12"×12"×17 1/8" or 20 7/8" deep, and are available with 4 inch and 6 inch outlets.
- Basins come with 3/8" thick solid cover to withstand heavy traffic loads.
- The exposed surface of the catch basin frames are made from T304/T316 stainless steel. They have quick levelers on both sides of the basin for easy installation.

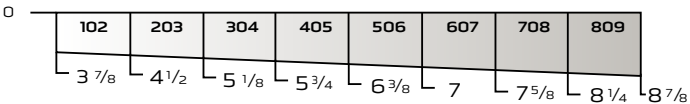
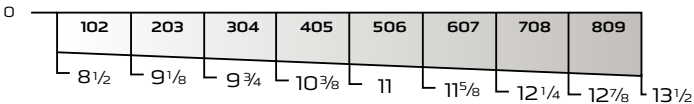
SPECIFICATIONS — SLOT DRAIN® PROFILES

Standard sections are available in two lengths:

9'8"



4'10"

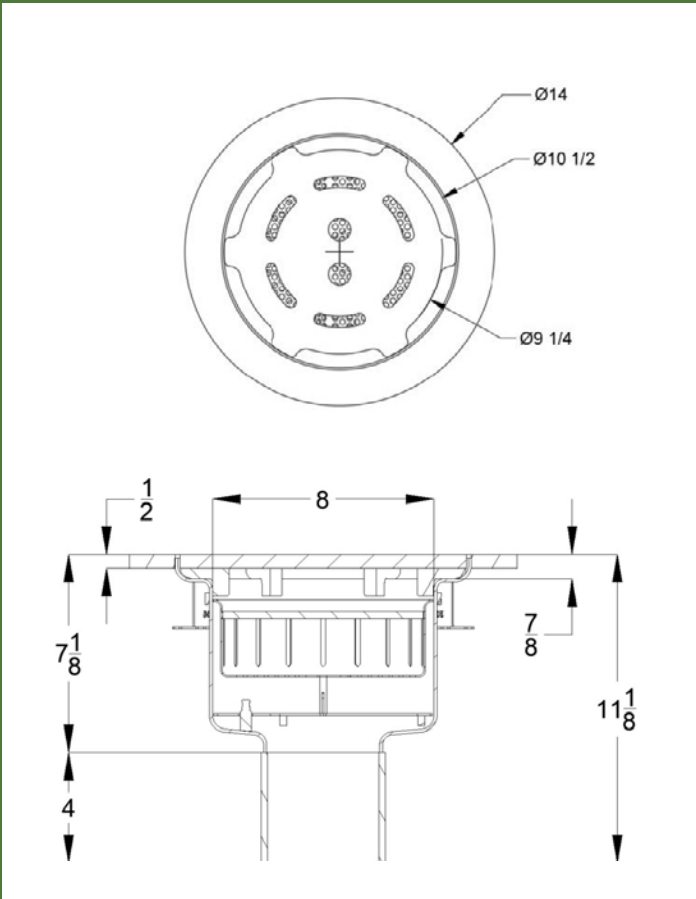


10,000 SERIES SLOT DRAIN® SECTION	INVERT SHALLOW	INVERT DEEP
102	8 1/2	9 1/8
203	9 1/8	9 3/4
304	9 3/4	10 3/8
405	10 3/8	11
506	11	11 5/8
607	11 5/8	12 1/4
708	12 1/4	12 7/8
809	12 7/8	13 1/2

6000-PLUS SERIES SLOT DRAIN® SECTION	INVERT SHALLOW	INVERT DEEP
102	3 7/8	4 1/2
203	4 1/2	5 1/8
304	5 1/8	5 3/4
405	5 3/4	6 3/8
506	6 3/8	7
607	7	7 5/8
708	7 5/8	8 1/4
809	8 1/4	8 7/8

- Standard Slot Drains are 9'8" or 4'10" long and are available in 1/2", 1" and 1 1/4" wide Slot openings.
- Drain bodies are either made of T304 or T316 Stainless Steel with a round bottom profile.
- The surfacing areas and drain frame are made from T304/T316 Stainless steel.
- Drain channels are built with a 0.5% built-in slope and continue to unlimited lengths. End caps, catch basins, and strainer baskets complement the channels. End outlets, bottom outlets and side outlets are available in 3", 4" and 6" diameters based on the drain Profile.
- Inserts for flushing, SlotHog and Tri-Clamp lid are optional items.

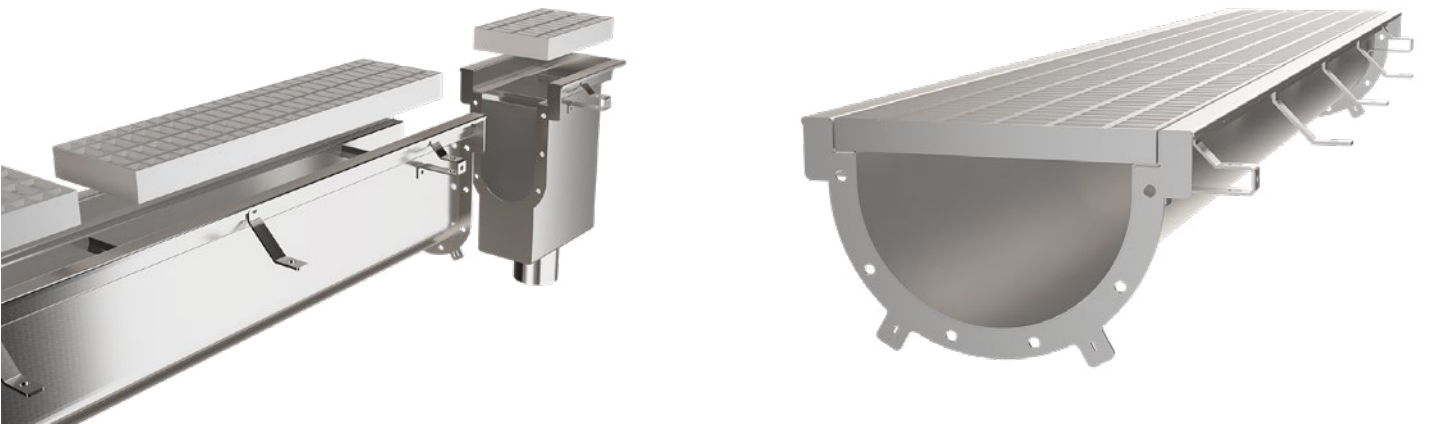
SPECIFICATIONS — AREA DRAIN



MEASUREMENTS	STAINLESS
Drain Top ID	8"
Drain OD	10 1/2"
Lid Diameter	9 3/4"
Lid Height with Spacer	7/8"
Lid Height	1/2"
Outlet Diameter	4" or 6"
Outer Edge of Frame	14"

- Area Drains are constructed from either T304 or T316 stainless steel as 10 1/2" x 8" deep, and are available with a 4 inch outlet.
- Area Drains come with a 1/2" thick perforated SS cover and can withstand heavy traffic loads.
- The exposed surface of the Area Drains frames are made from T304 or T316 stainless steel. They have rebar tie-ins for easy installation.
- Area Drains are manufactured in either round and square top designs.
- Area Drains feature a specialized tamper-proof lock for secondary strainer.
- The No-Corner design of the Food Safe Area Drain ensures that there is no harboring points for bacteria inside the drain body.

SPECIFICATIONS — TRENCH DRAIN PROFILE



	7' 6" LONG	
FOOD SAFE TRENCH DRAIN SECTION	INVERT SHALLOW	INVERT DEEP
102	7 5/8	8 1/16
203	8 1/16	8 1/2
304	8 1/2	8 15/16
405	8 15/16	9 7/16
506	9 7/16	9 7/8
607	9 7/8	10 5/16
708	10 5/16	10 3/4
809	10 3/4	11 1/4
9010	11 1/4	11 11/16

- Standard drains are built with a 0.5% built-in slope and continue to unlimited lengths.
- T304/T316 stainless steel trench drain channels are 7'6" long, with 4", 6", 8", 10" and 12" wide drain body.
- Drain bodies are either made of T304 or T316 stainless steel and a round bottom, 'v' bottom and flat bottom profile.
- The surfacing areas and drain frame are made from T304 or T316 Stainless steel.

HERE FOR YOU EVERY STEP OF THE WAY.

No matter your drainage need, our experts are here to guide you through the process every step of the way.

From layout to installation, we make sure our expertise and experience are available to you. We focus on your drains, so you can focus on what matters.

Whatever your operations requirements are, we have a line of drains ready to make your life easier. Think of us as your one-stop drainage shop. Is hygiene and easy to clean of the utmost importance? Need solids to be able to reliably removed via drain, without fear of clogging? Want a trip-free, odor-free option that keeps both your production staff and your company safe? We have drains that can meet any of these needs and more. So if want drains that won't cost you time or money down the line, go with FoodSafe Drains, and let our drains work for you.

**SEND US YOUR PLANS OR LET US ASSIST
YOU WITH YOUR DESIGNS.**

To get started, please submit your details by email, or give us a call.



"I decided to retrofit floor drains in our plant. In a timely fashion you supplied drawings and specifications to match my needs. The materials were received on time, properly packed and protected for delivery. Everything came with complete detailed installation instructions. Thank you for providing this cost effective and permanent solution to our floor drain system. I am proud to show off my drains to visitors to my plant and I plan to install Food Safe Drains in more areas of my facility."

Jon Liss, President
Michel's Bakery, PA



CONTACT US

To order FoodSafe Drains, please contact

TF 855.497.7508

E info@foodsafedrains.com

W foodsafedrains.com



A Division of

